

# NICHE 2NR LED

## HOUSING

TO BE FORMED FROM 20GA CRS  
 FINISH: ECO WHITE (STANDARD)  
 ALL STEEL PARTS ARE PHOSPHATE  
 TREATED FOR CORROSION RESISTANCE  
 BEFORE PAINT PROCEDURE, THEN  
 BAKED WITH SUPERIOR ADHESION  
 FOR DURABILITY

## LED MODULES

HIGHER EFFICACY UP TO 170 LPW  
 WITH SERVICE LIFE GREATER THAN  
 60000(L70) HIGH COLOR RENDR AND  
 EXCELLENT COLOR CONSISTENCY  
 COLOR OPTIONS AVAILABLE FROM  
 27K TO 40K .  
 90 CRI LEDS AVAILABLE AS OPTIONAL

## DRIVERS

CONSTANT CURRENT, CLASS 2  
 UNIVERSAL INPUT : 120-277VAC  
 SOUND RATED A, 54V OUTPUT 0-10V  
 DIMMING STANDARD .  
 DALI, ECOSYSTEM AND DMX DRIVERS  
 ALSO AVAILABLE

## REFLECTOR

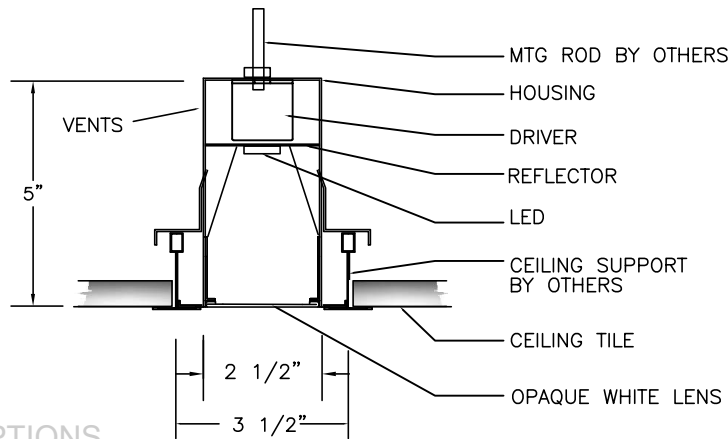
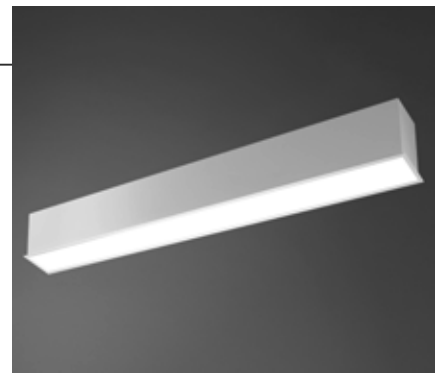
TO BE FORMED FROM 20GA CRS  
 FINISH: BAKED WHITE ENAMEL WITH  
 90% REFLECTIVITY

## MOUNTING

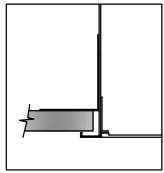
FLANGE, SLOT GRID  
 FLANGELESS, 15/16 GRID(T)  
 9/16 GRID(T1)

## PRODUCT DESCRIPTION

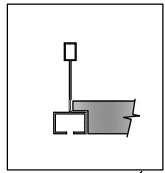
THE 2NR LED COMBINES DIGITAL LIGHTING WITH A  
 UNIQUE APPROACH TO LINEAR RECESSED LIGHTING.  
 THE ADVANCED DESIGN OF THE 2NR LED OFFERS  
 60,000 HOURS LIFE. EXCELLENT COLOR AND CONTINUOUS  
 UNINTERRUPTED LIGHT WITHOUT SHADOWS. THE 2"  
 NOMINAL WIDE FIXTURE COMBINED WITH A LED LIGHT  
 SOURCE PROVIDES AESTHETICS AND ENERGY EFFICIENCY



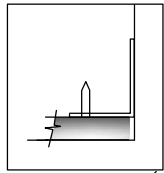
## CEILING OPTIONS



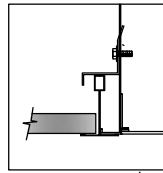
FLANGE(F)



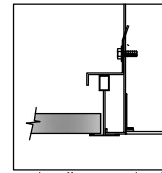
SLOT GRID( SG)



FLANGELESS(FO)



GRID 15/16(T)



9/16"GRID (T1)

## ORDERING KEY

SERIES	Lumens/ft (Watts/ft)	LENGTH	COLOR TEMP	CEILING TYPE	VOLTAGE	OPTIONS
NICHE 2NR LED	<input type="checkbox"/> LO 639(5.97)	<input type="checkbox"/> 2'	<input type="checkbox"/> 2700K*	<input type="checkbox"/> T1 9/16	<input type="checkbox"/> 120 V	<input type="checkbox"/> EM
	<input type="checkbox"/> MO 894.75(8.9)	<input type="checkbox"/> 3'	<input type="checkbox"/> 3000K	<input type="checkbox"/> T	<input type="checkbox"/> 277 V	<input type="checkbox"/> 0-10V
	<input type="checkbox"/> HO 1080(10.5)	<input type="checkbox"/> 4'	<input type="checkbox"/> 3500K	<input type="checkbox"/> F	<input type="checkbox"/> UNIVERSAL	<input type="checkbox"/> DALI
	<small>Please contact National for other options.</small>	<input type="checkbox"/> 6'	<input type="checkbox"/> 4000K	<input type="checkbox"/> SG		<input type="checkbox"/> EcoSystem, 2 WIRE
		<input type="checkbox"/> 8'	<input type="checkbox"/> 5000K	<input type="checkbox"/> FO		<input type="checkbox"/> L3DA-3Wire or Eco1%
		<input type="checkbox"/> ROWS				<input type="checkbox"/> LDE1 - Eco1%
						<input type="checkbox"/> SENSOR(OCC/VAC)

LUMENS WILL VARY SLIGHTLY DEPENDING ON  
 DIFFUSER AND LED COLOR TEMP. PLEASE  
 CONSULT NATIONAL FOR 2700K AND 90CRI LEDS

NATIONAL 3E/LED SERIES USES ENGINE/STICK ORIGINAL EQUIPMENT (BY OSRAM, PHILIPS,  
 SAMSUNG, ET AL) WHICH ARE RATED FOR APPROXIMATELY 100 LM/W. ARCHITECTURAL  
 LENSES PROVIDED WITH THE LUMINAIRES BY DESIGN EVEN THE BRIGHTNESS AND VISUAL  
 COMFORT AND MIGHT FRACTIONALLY LOWER LMWT.

TYPE: \_\_\_\_\_

PROJECT: \_\_\_\_\_

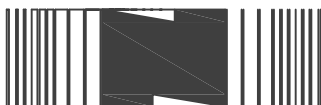
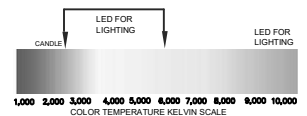
EVEN AND VISUALLY  
 COMFORTABLE LED  
 LIGHT DISTRIBUTION  
 ACROSS PROFILE OF  
 THE PRODUCT

50% ENERGY  
 SAVINGS COMPARED  
 TO LINEAR  
 FLUORESCENT

SUSTAINABLE  
 MATERIALS

ARRAY OF LUMEN  
 OPTIONS ALL  
 LM79/LM80 UL  
 APPROVED

5 YEAR WARRANTY  
 LED AND DRIVER



522 CORTLANDT ST.  
 BELLEVILLE, NJ 07109

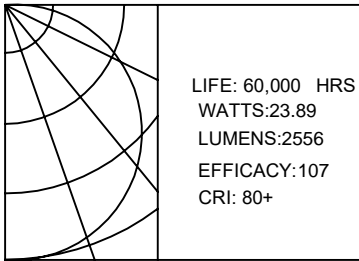
NJ 973-751-1600  
 NY 212-751-1600  
 FAX 973-751-4931  
 WWW.NATLTG.COM

Modules and drivers are UL recognized  
 components and RoHS compliant.  
 LED modules also comply with IENSA  
 LM-79 and LM-80 standards.

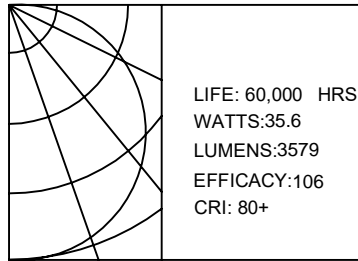


# PHOTOMETRIC DATA

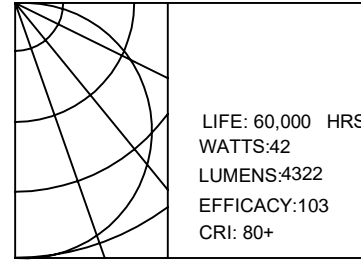
## 2NR LED-LO



## 2NR LED-MO

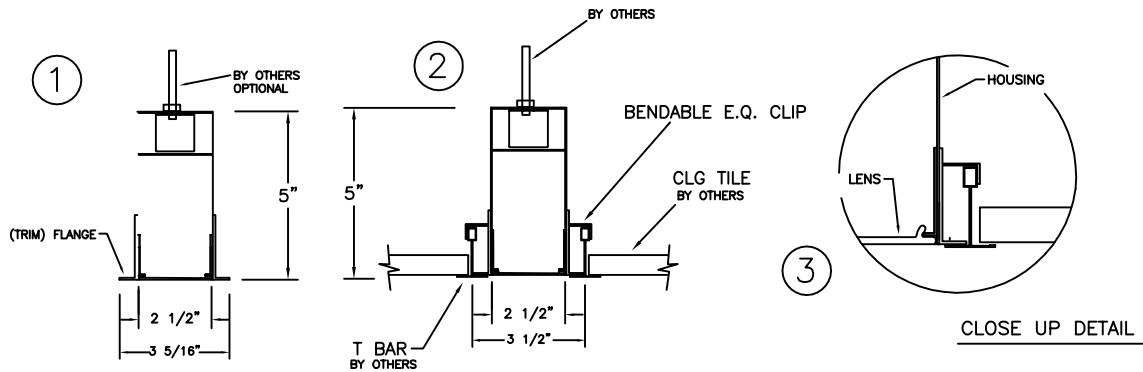


## 2NR LED-HO

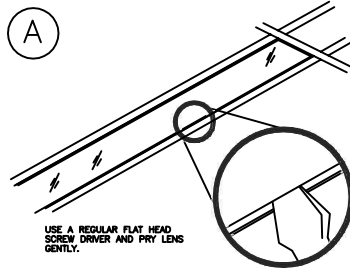


All values are based on 4' Section.

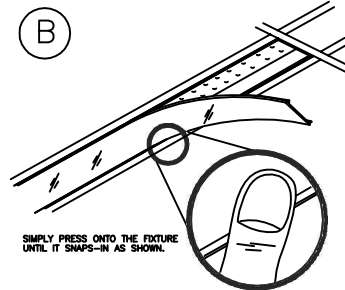
## MOUNTING INSTRUCTIONS



### HOW TO REMOVE LENS



### HOW TO INSTALL LENS

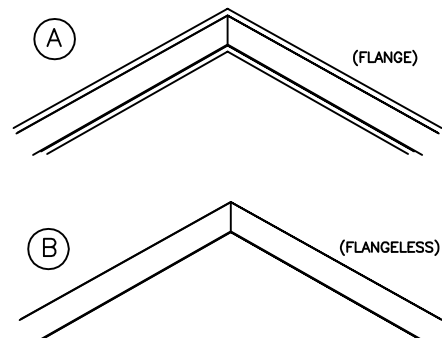


## LIGHTING CONTROL SOLUTIONS

- DIMMING ( 0-10V, DALI Or Lutron )**
  - 0-10V Dimming Driver used as standard.
  - Continuous Dimming up to 10%.
  - Dimming wires not provided unless specified
  - Contact National for Dali or Lutron Control system
- Occ/DAYLIGHT/Vacancy/Bi-Level**
  - Sensor-ready and compatible drivers provided.
  - Sensors can be field installed or could be installed in the fixtures
  - Bi-level dimming and Motion sensors also available
- Compatibility:**

National fixtures are compatible with Lutron, Philips Actilume, Magnum, Wattstopper, Hubbell , Leviton , Hytronik , Daintree & Enlighted Control System

## CORNER DETAIL



NATIONAL LIGHTING COMPANY, INC.  
522 CORTLANDT ST.  
BELLEVILLE, NJ 07109

NJ 973-751-1600  
NY 212-751-1600  
FAX 973-751-4931  
WWW.NATLTG.COM

JOB NAME:
CATALOG:
TYPE: