

# SF 10 D/ID LED

## HOUSING

THE 2 INCHES DEEP HSG TO BE FORMED FROM 20GA CRS. FINISH BAKED WHITE ENAMEL(STANDARD). ALL FIXTURES ARE PRE-WIRED. ALL STEEL PARTS ARE PHOSPHATE TREATED FOR CORROSION RESISTANCE BEFORE PAINT PROCEDURE THEN BAKED WITH SUPERIOR ADHESION FOR DURABILITY.

## LED MODULES

HIGHER EFFICACY UP TO 170 LPW WITH SERVICE LIFE GREATER THAN 60000(L70) HIGH COLOR RENDER AND EXCELLENT COLOR CONSISTENCY COLOR OPTIONS AVAILABLE FROM 27K TO 40K . 90 CRI LEDS AVAILABLE AS OPTIONAL

## DRIVERS

CONSTANT CURRENT, CLASS 2  
UNIVERSAL INPUT : 120-277VAC  
SOUND RATED A, 54V OUTPUT 0-10V  
DIMMING STANDARD .  
DALI, ECOSYSTEM AND DMX DRIVERS ALSO AVAILABLE

## REFLECTOR

TO BE FORMED FROM 20GA CRS  
FINISH: BAKED WHITE ENAMEL WITH  
90% REFLECTIVITY

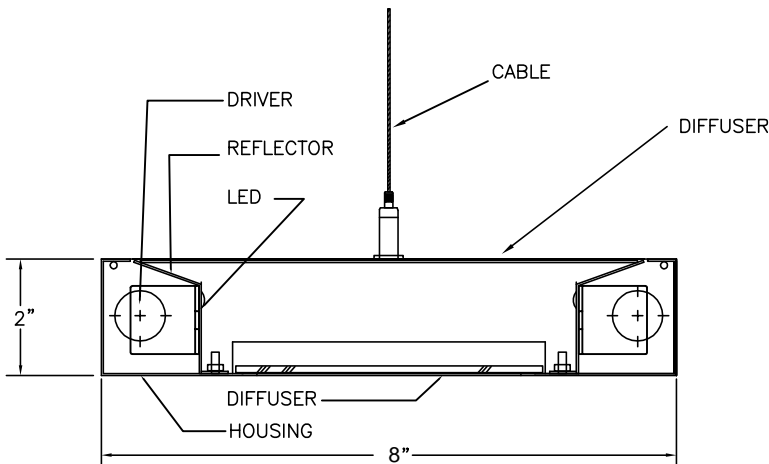
## MOUNTING

AIRCRAFT CABLE, PENDANT OR  
WALL MOUNTED



## PRODUCT DESCRIPTION

THE SF10 LED SERIES IS A LOW PROFILE FIXTURE WITH DIRECT/INDIRECT LIGHTING DISTRIBUTION IDEAL FOR OPEN OFFICES, CONFERENCE ROOMS, AND PUBLIC AREAS. **THE RECTILINEAR DESIGN FITS IDEALLY INTO WIDE AND BROAD CONTEMPORARY OPEN OFFICES, CLASSROOMS OR LABORATORY SPACES. THE APERTURE OF THE FIXTURE PROVIDES MORE OF A DIRECT LIGHT COMPONENT THAN OTHER COMPANION PIECES IN THE NATIONAL PRODUCT LINE. THE LEDS AND DIMMING DRIVERS CAN PROVIDE HIGHER OR LOWER LUMENS AS REQUIRED. THE WIDE HORIZONTAL DISTRIBUTION OF THE LEDS RESULTS IN UNPARALLELED SPACING.** OPTICAL WHITE DIFFUSERS ENHANCES THE FIXTURE DESIGN. 60000 HOURS OF LIFE AND EXCELLENT COLOR RENDITION ARE PRODUCTS OF THE CUTTING EDGE LED SYSTEM.



TYPE: \_\_\_\_\_

PROJECT: \_\_\_\_\_

EVEN AND VISUALLY COMFORTABLE LED LIGHT DISTRIBUTION ACROSS PROFILE OF THE PRODUCT

50% ENERGY SAVINGS COMPARED TO LINEAR FLUORESCENT

SUSTAINABLE MATERIALS

ARRAY OF LUMEN OPTIONS ALL LM79/LM80 UL APPROVED

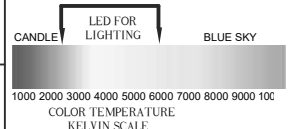
5 YEAR WARRANTY LED AND DRIVER

## ORDERING KEY

SERIES	LUMENS (W/ft)	LENGTH	COLOR TEMP	MOUNTING	VOLTAGE	OPTIONS
SF10D/ID LED	<input type="checkbox"/> LO 950(11W/ft) <input type="checkbox"/> MC 1050(12.75W/ft) <input type="checkbox"/> HC 1300(15W/ft) Please contact National for other options.	<input type="checkbox"/> 4' <input type="checkbox"/> 8' <input type="checkbox"/> ROWS	<input type="checkbox"/> 2700K <input type="checkbox"/> 3000K <input type="checkbox"/> 3500K <input type="checkbox"/> 4000K <input type="checkbox"/> 5000K	<input type="checkbox"/> AC - CABLE <input type="checkbox"/> P - STEM <input type="checkbox"/> WM - WALL <input type="checkbox"/> 24" <input type="checkbox"/> 48" <input type="checkbox"/> OTHER _____	<input type="checkbox"/> 120 V <input type="checkbox"/> 277 V <input type="checkbox"/> UNIVERSAL	<input type="checkbox"/> EM <input type="checkbox"/> DIM 0-10 <input type="checkbox"/> DALI <input type="checkbox"/> LUTRON, ECOSYS <input type="checkbox"/> LUTRON -3 WIRE <input type="checkbox"/> LUTRON 2-WIRE/AC

LUMENS WILL VARY DEPENDING ON DIFFUSER AND LED COLOR TEMP

NATIONAL 3E/LED SERIES USES ENGINE/STICK ORIGINAL EQUIPMENT (BY OSRAM, PHILIPS, SAMSUNG, ET AL) WHICH ARE RATED FOR APPROXIMATELY 100 LM/W. ARCHITECTURAL LENSES PROVIDED WITH THE LUMINAIRES BY DESIGN EVEN THE BRIGHTNESS AND VISUAL COMFORT AND MIGHT FRACTIONALLY LOWER LM/W.

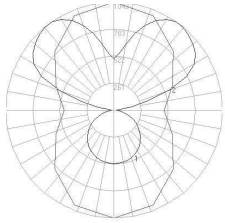


522 CORTLANDT ST.  
BELLEVILLE, NJ 07109

NJ 973-751-1600  
NY 212-751-1600  
FAX 973-751-4931  
WWW.NATLTG.COM

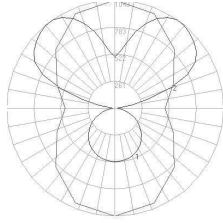


# PHOTOMETRIC DATA



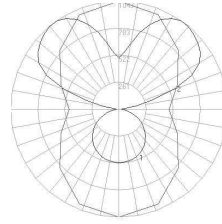
LIFE: 60,000 HRS  
WATTS:33  
LUMENS:3689  
EFFICACY:112  
CRI: 80+

ID70/ D30



LIFE: 60,000 HRS  
WATTS:45  
LUMENS:5589  
EFFICACY:124  
CRI: 80+

ID70/ D30



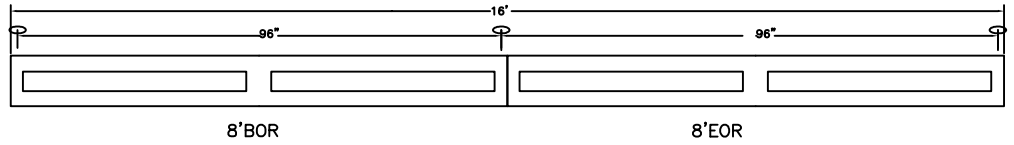
LIFE: 60,000 HRS  
WATTS:52  
LUMENS:6148  
EFFICACY:118  
CRI: 80+

ID70/ D30

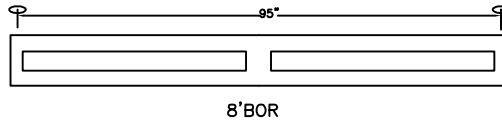
VALUES ARE BASED ON 4' SECTION FOR OTHER DISTRIBUTION LIKE 80ID/20D AND 60ID/D40 PLEASE CONTACT NATIONAL.

## MOUNTING INSTRUCTIONS

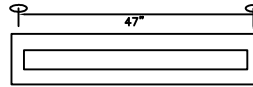
TYPICAL 16' RUN



TYPICAL 8' IND

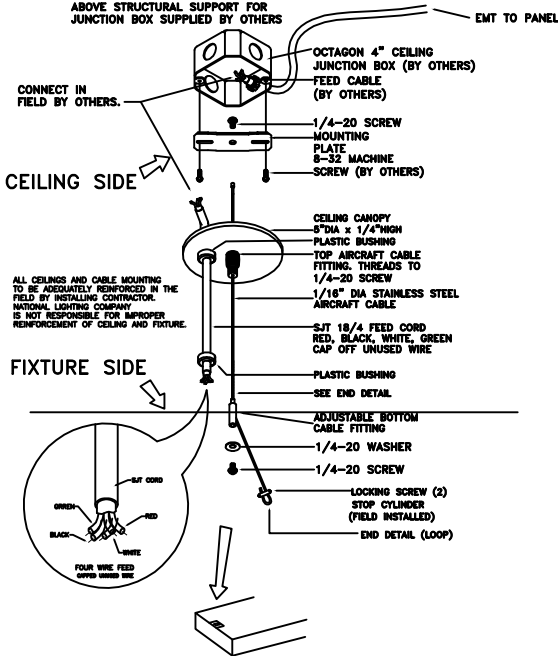


TYPICAL 4' IND



### AIRCRAFT CABLE MOUNTING ASSEMBLY WITH POWER CORD

NOTE:  
ABOVE STRUCTURAL SUPPORT FOR  
JUNCTION BOX SUPPLIED BY OTHERS



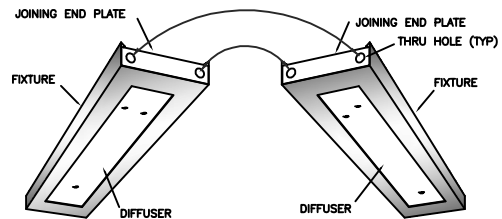
ALL CEILINGS AND CABLE MOUNTING TO BE ADEQUATELY REINFORCED IN THE FIELD BY INSTALLING CONTRACTOR. NATIONAL LIGHTING COMPANY IS NOT RESPONSIBLE FOR IMPROPER REINFORCEMENT OF CEILING AND FIXTURE.

## LIGHTING CONTROL SOLUTIONS

- 1. DIMMING ( 0-10V, DALI Or Lutron )**
  - 0-10V Dimming Driver used as standard.
  - Continuous Dimming up to 10%.
  - Dimming wires not provided unless specified
  - Contact National for Dali or Lutron Control system
- 2. Occ/DAYLIGHT/Vacancy/Bi-Level**
  - Sensor-ready and compatible drivers provided.
  - Sensors can be field installed or could be installed in the fixtures
  - Bi-level dimming and Motion sensors also available
- 3. Compatibility:**

National fixtures are compatible with Lutron, Philips Actilume, Magnum, Wattstopper, Hubbell , Leviton , Hytronik , Daintree & Enlighted Control System

## CORNER DETAIL



NOTE: CHASE NIPPLE SUPPLIED BY OTHERS FOR THRU HOLES AS SHOWN. IT IS INCUMBENT UPON FOR THE CONTRACTOR TO FIELD ALIGNED UNITS.



NATIONAL LIGHTING COMPANY, INC.  
522 CORTLANDT ST.  
BELLEVILLE, NJ 07109

NJ 973-751-1600  
NY 212-751-1600  
FAX 973-751-4931  
WWW.NATLTG.COM

JOB NAME:	
CATALOG:	
TYPE:	