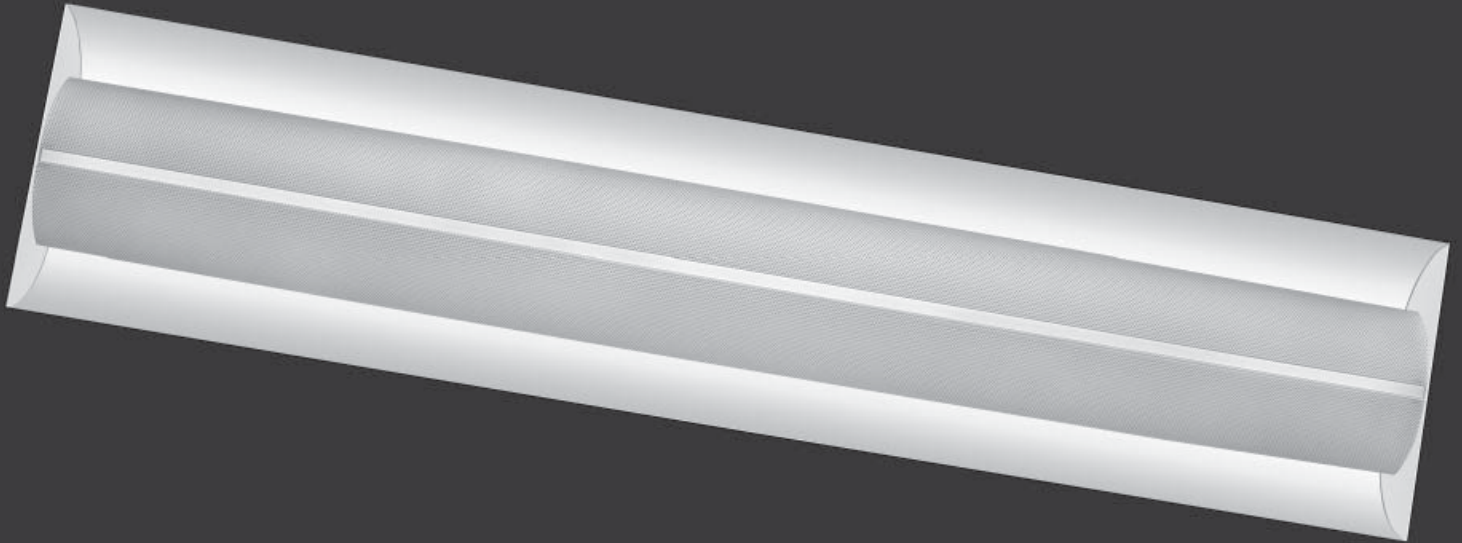




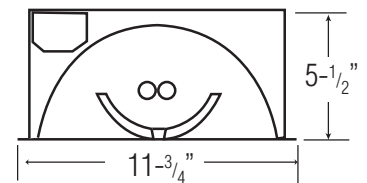
New Biomedical Engineering Lab  
City College of New York  
Stephan Ely, Architect



# AST SERIES



The AST/CB-14 is designed to generate an indirect/direct lighting distribution. The reflecting system is computer designed to assure effective glare control. The AST/CB-14 is ideal for lobbies, conference rooms, corridors, executive offices and spaces where the fixture may be viewed directly.



National Lighting Company, Inc. 522 Cortlandt Street, Belleville, New Jersey 07109  
212-751-1600 • 973-751-1600 • FAX-973-751-4931  
[www.natlgt.com](http://www.natlgt.com)