

# NICHE 2NS LED

## HOUSING

THE 5" INCH NOMINAL DEEP HSG TO BE FORMED FROM EXTRUDED ALUMINUM 6063T5 (STANDARD) ALL FIXTURES ARE PRE-WIRED. ALL STEEL PARTS ARE PHOSPHATE TREATED FOR CORROSION RESISTANCE BEFORE PAINT PROCEDURE, THEN BAKED WITH SUPERIOR ADHESION FOR DURABILITY.

## LED MODULES

HIGHER EFFICACY UP TO 170 LPW WITH SERVICE LIFE GREATER THAN 60000(L70) HIGH COLOR RENDER AND EXCELLENT COLOR CONSISTENCY COLOR OPTIONS AVAILABLE FROM 27K TO 40K . 90 CRI LEDS AVAILABLE AS OPTIONAL

## DRIVERS

CONSTANT CURRENT, CLASS 2  
UNIVERSAL INPUT : 120-277VAC  
SOUND RATED A, 54V OUTPUT 0-10V  
DIMMING STANDARD .  
DALI, ECOSYSTEM AND DMX DRIVERS  
ALSO AVAILABLE

## REFLECTOR

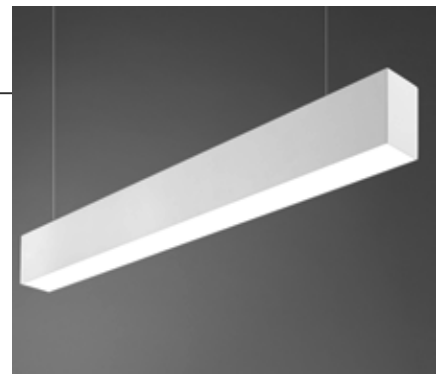
TO BE FORMED FROM 20-24GA ALUMINUM  
FINISH: BAKED WHITE ENAMEL WITH  
90% REFLECTIVITY

## MOUNTING

SURFACE, CABLE, PENDANT OR WALL  
MOUNT

## PRODUCT DESCRIPTION

THE 2NS LED INSURES EXCELLENT FINISH, AND LONG CONTINUOUS UNINTERRUPTED ROWS OF FIXTURES WHILE KEEPING HOUSING DIFFUSION ACCURATE. THE ADVANCED DESIGN OF THE LED 2NS OFFERS HIGH EFFICIENCY AND A MINIMUM OF 60,000 HOURS OF LAMP LIFE, EXCELLENT COLOR AND CONTINUOUS UNINTERRUPTED DIRECT LINE. SURFACE, PENDANT AND WALL MOUNTED FIXTURES ARE AVAILABLE. SNAP ON EXTRUDED FROSTED DIFFUSER CREATE SOFT, EVEN LIGHT.



TYPE:

PROJECT:

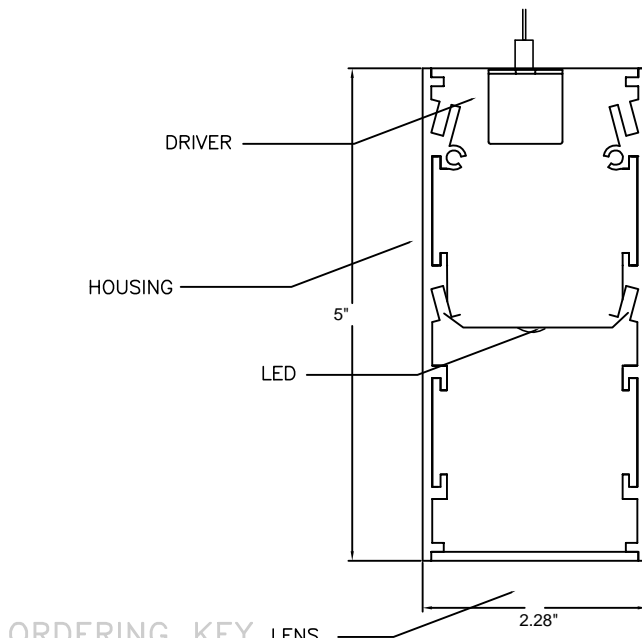
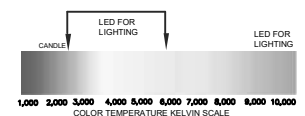
EVEN AND VISUALLY  
COMFORTABLE LED  
LIGHT DISTRIBUTION  
ACROSS PROFILE OF  
THE PRODUCT

50% ENERGY  
SAVINGS COMPARED  
TO LINEAR  
FLUORESCENT

SUSTAINABLE  
MATERIALS

ARRAY OF LUMEN  
OPTIONS ALL  
LM79/LM80 UL  
APPROVED

5 YEAR WARRANTY  
LED AND DRIVER



## ORDERING KEY

| SERIES                 | LUMENS/ft (W/ft)   | LENGTH   | COLOR TEMP   | MOUNTING  | VOLTAGE  | OPTIONS  |
|------------------------|--|--|--|---|--|--|
| NICHE 2NS LED (DIRECT) | <input type="checkbox"/> LO 639(5.97)<br><input type="checkbox"/> MC 894.75(8.9)<br><input type="checkbox"/> HO 1080(10.5)<br>Please contact National for other options. | <input type="checkbox"/> 2'<br><input type="checkbox"/> 3'<br><input type="checkbox"/> 4'<br><input type="checkbox"/> 6'<br><input type="checkbox"/> 8'<br><input type="checkbox"/> ROWS | <input type="checkbox"/> 2700K<br><input type="checkbox"/> 3000K<br><input type="checkbox"/> 3500K<br><input type="checkbox"/> 4000K<br><input type="checkbox"/> 5000K | <input type="checkbox"/> SM-SURFACE<br><input type="checkbox"/> AC - CABLE<br><input type="checkbox"/> P - STEM<br><input type="checkbox"/> WM-Wall Mount<br><input type="checkbox"/> OTHER<br><small>!!! If suspended, please advise the size of cable or Pendant.</small> | <input type="checkbox"/> 120 V<br><input type="checkbox"/> 277 V<br><input type="checkbox"/> UNV | <input type="checkbox"/> EM<br><input type="checkbox"/> DIM 0-10<br><input type="checkbox"/> DALI<br><input type="checkbox"/> Hilume 1%2 Wire-LTEA2W<br><input type="checkbox"/> Hilume 1% Eco-LDE1<br><input type="checkbox"/> Hilume 5% LDE5 |

LUMENS WILL VARY  
DEPENDENT ON DIFFUSER  
AND LED COLOR TEMP.

NATIONAL 3E/LED SERIES USES ENGINE/STICK ORIGINAL EQUIPMENT (BY OSRAM, PHILIPS, SAMSUNG, ET AL) WHICH ARE RATED FOR APPROXIMATELY 150 LM/WT. ARCHITECTURAL LENSES PROVIDED WITH THE LUMINAIRES BY DESIGN EVEN THE BRIGHTNESS AND VISUAL COMFORT AND MIGHT FRACTIONALLY LOWER LMWT.



522 CORTLANDT ST.  
BELLEVILLE, NJ 07109

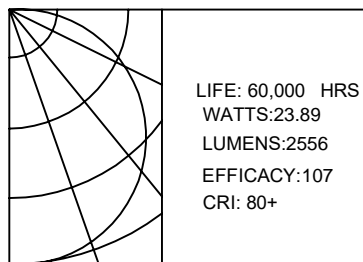
NJ 973-751-1600  
NY 212-751-1600  
FAX 973-751-4931  
WWW.NATLTG.COM

Modules and drivers are UL recognized components and RoHS compliant. LED modules also comply with IENSA LM-79 and LM-80 standards.

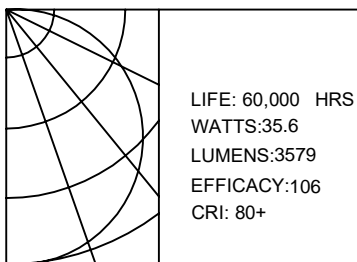


# PHOTOMETRIC REPORT

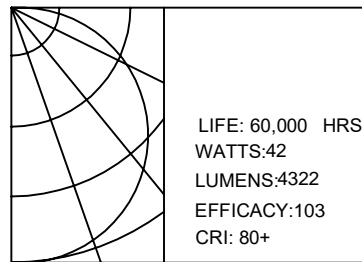
## 2NS LED-LO



## 2NS LED-MO

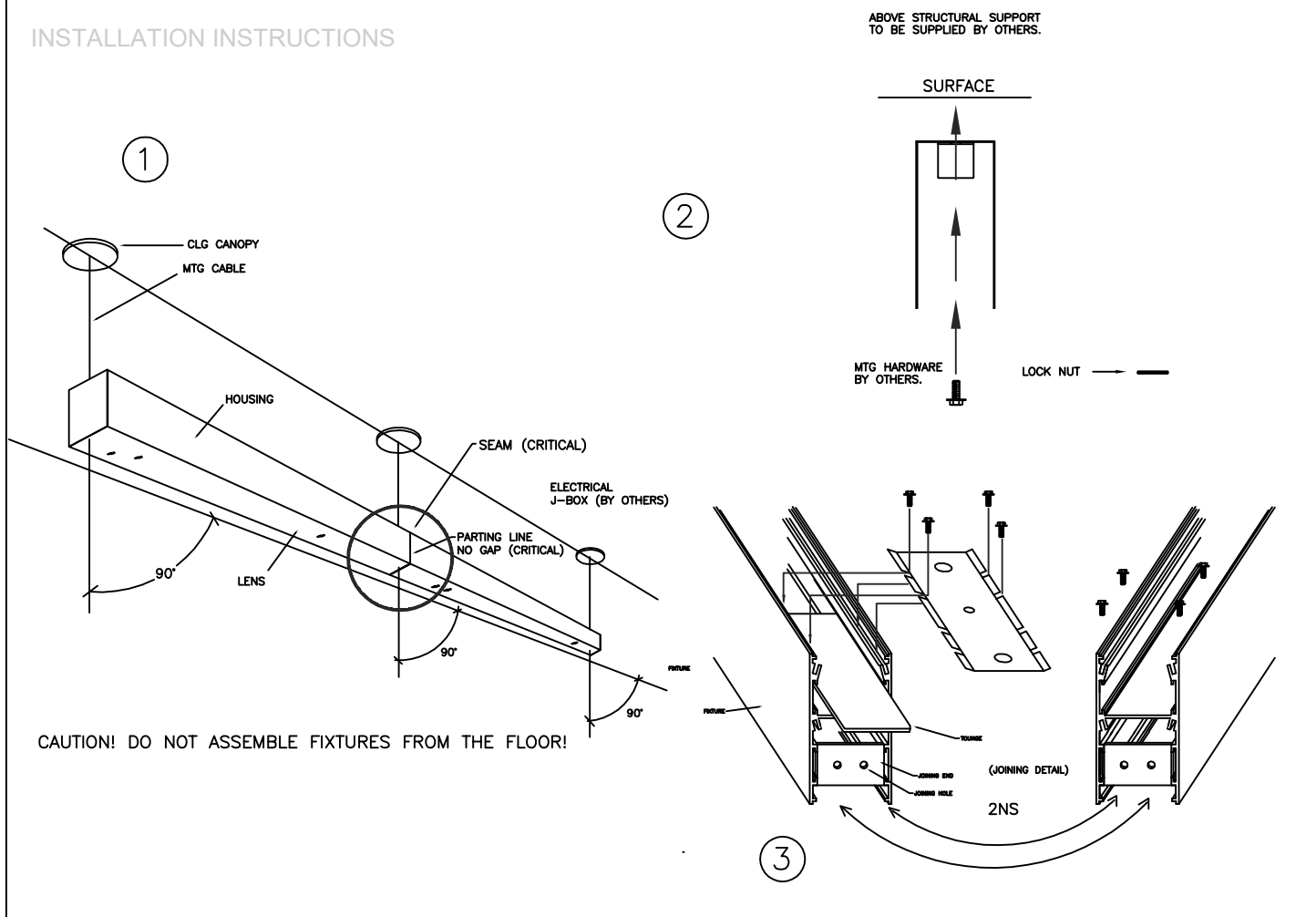


## 2NS LED-HO



All values are based on 4' Section.

## INSTALLATION INSTRUCTIONS



## LIGHTING CONTROL SOLUTIONS

- DIMMING ( 0-10V, DALI Or Lutron )**
  - 0-10V Dimming Driver used as standard.
  - Continuous Dimming up to 10%.
  - Dimming wires not provided unless specified
  - Contact National for Dali or Lutron Control system
- Occ/DAYLIGHT/Vacancy/Bi-Level**
  - Sensor-ready and compatible drivers provided.
  - Sensors can be field installed or could be installed in the fixtures
  - Bi-level dimming and Motion sensors also available
- Compatibility:**

National fixtures are compatible with Lutron, Philips Actilume, Magnum, Wattstopper, Hubbell , Leviton , Hytronik , Daintree & Enlighted Control System

## APPLICATION PICTURE



NATIONAL LIGHTING  
COMPANY, INC.  
522 CORTLANDT ST.  
BELLEVILLE, NJ 07109

NJ 973-751-1600  
NY 212-751-1600  
FAX 973-751-4931  
WWW.NATLTG.COM

|           |
|-----------|
| JOB NAME: |
| CATALOG:  |
| TYPE:     |